

Vend Test Database

ECN #: 006257
 Test #: 2008-1555-02

Date: 04/01/2009 *Model: 5000

*Size: 18.5 OZ *Type: PET *Description: FUZE
 Country: USA

Pkg. Dia. (inches): 2.85 Pkg. Ht. (inches): 8.66
 Pkg. Dia. (mm): 72.4 Pkg. Ht. (mm): 219.97

New
 Revised

Instructions:

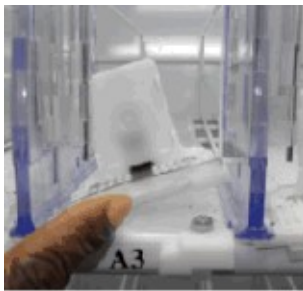
Release Level: 2

Applicable Shelves:

- A
- B
- C
- D
- E

Column Capacity: 8
 Tray Capacity: 72
 Total Capacity: 360

Qty	Part Number	Description
		No spacer required
1	801,812,99x.x1	rotator, white columns 2 thru 8
1	801,812,84x.x1	stabilizer columns 1 & 9
1	801,812,85x.x1	stabilizer columns 2 thru 8
1	801,824,28x.x1	washer, .375 dia nylon columns 1 thru 9



Notes: **A nylon washer was added to increase the height of each screw holding the right front edge of the slides away from the trays.**