

MERCHANT MEDIA

TRANSFORMING THE WAY CONSUMERS EXPERIENCE VENDING



Win New Business:

Differentiate your offering & win
NEW LOCATIONS

Maximize Sales:

Media offers new retail tools that
drive SAME-STORE SALES

Provide Long Lasting Solutions:

Built-In DURABILITY and
RELIABILITY that keep the store
working



Meets new ADA
requirements

CRANE MERCHANDISING SYSTEMS

MERCHANT MEDIA



Specifications

	Model 186	Model 187
Height:	72"	72"
Width:	33"	44"
Depth:	35"	35"
Weight:	510 lbs.	610 lbs.
Electrical:	115 VAC	120 VAC
	60Hz, 3A	60Hz, 3A
Certifications:	UL, cUL, CE, FCC, NAMA	

Spiral Configuration Options



Merchant Media 4-Wide
38 Select Standard Model



Merchant Media 6-Wide
58 Select Standard Model

Built-In Telemetry Options

- For Remote Monitoring or Credit Card Payments:
 - Verizon (CDMA) - Standard
 - AT&T (GSM) and Sprint (CDMA) are also available
 - Local Mesh Network

Key Features

Color Displays

Pick from two stunning user interfaces to grab consumer's attention.

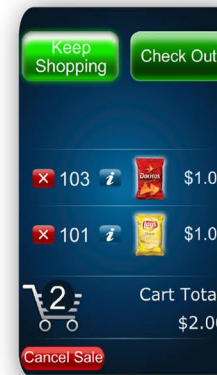


Out-Of-The-Box Cashless Option

Built-in and intuitive cashless solution helps capture every sale.

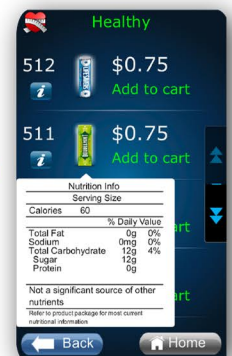
Largest Variety

Increase sales and consumer satisfaction with the largest number of selections in the industry.



Shopping Cart

Enables multi-product purchases in one, simple transaction. Consumers can pay before or after selection.



Nutritional Information

Provides easy-to-read nutritional facts (available for both 3.5" Color Display and 7" Touchscreen).



Built-In Multi-Product Promotions

Increase transaction size and drive consumer value

Guaranteed Product Delivery

Crane's SureVend technology ensures product delivery.



Healthy Graphics

Promote healthy options and increase sales by appealing to health-conscious consumers.

CRANE MERCHANDISING SYSTEMS

3330 Dixie-Narco Boulevard | Williston, SC 29853-0719
Tel: 1-800-688-9090 | www.cranems.com | MADE IN USA